



Manufacturing for Performance and Efficiency at

SKYLINE

STEEL REELS

REELS **PRODUCT** **OVERVIEW**

EMILYNE SKYYS S

MOTTO

To manufacture products for performance and efficiency to the highest standards of quality, setting benchmarks for ourselves and exceeding our clients' expectations.

VISION

To stay abreast of the latest technology and manufacturing processes, sustain growth, and achieve targets within our frame of reference, time, and resources.

MISSION

To deliver what our clients want and maintain customer relations before and after sales. We are committed to prompt responses to needs and providing dynamic, total solutions for applications.

STEEL REELS



SKYLINE is now a leading provider of a complete line of MILD STEEL SPOOLS / BOBBINS, available in single and double flanges for bunching, standing, wire processing, and shipping to various wires and cable manufacturing industries, as per custom requirements.

These SPOOLS / BOBBINS are manufactured from pressed steel or machined steel components and are cleanly finished with continuous welding, providing a seamless spool construction. Machining is done through CNC machines, and these SPOOLS / BOBBINS have tightly curled edges for the highest sturdiness, created using very sophisticated and hi-tech machines. Further assembly is done using semi-automatic machinery, and finally, static and dynamic balancing is performed to ensure a long-lasting product that will not compromise the operation of the machinery it is used with.

Pressed steel profiles are used to create a lightweight spool with extremely robust characteristics. The curled edges on the outside of the flanges cause the spool to absorb heavy loads, ensuring that the spool remains true to its original geometry through the various stiffening points. Extra care is taken to ensure a 90-degree angle between the drum and the flanges, while applying a continuous welding seam.

TAKE APART REEL

A solid spool for continuous use over time, operated by a nut screw. Available sizes adhere to DIN 46395 specifications or as indicated by the customer.

APPLICATIONS:

- Take-apart spool.
- For metallic, enameled and capillary metallic wires.
- Used for high-speed wire drawing machines and coil transfer.



STANDARD:

- Din 46395.
- Fully turned all over on the winding surfaces.
- Central screw with a dead hole and safety lock.
- Supplied with 4, 6, or 8 slots for metal straps insertions.
- Dynamically balanced for speeds up to 40m/s.

SURFACE COATING:

- Painting as per customer specification.

CUSTOMIZED:

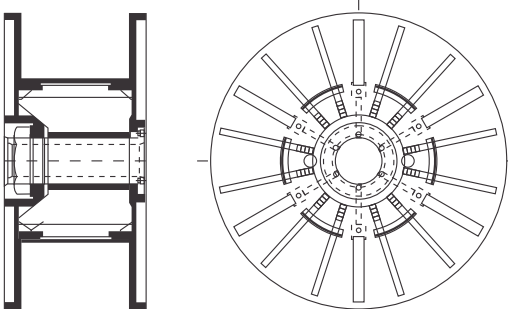
- Arrangement for cardboard tube use.
- Cone-shaped drum for transferring the coil.
- Plastic, polyethylene, and carpet for inside lining.
- Engraving of progressive numbering, tare, and customer's logo.

STANDARD SIZE (MM):

- 630, 800, 1000.
- Other dimensions also available.

OPTIONAL:

- Extra stiffened drum.
- Replaceable hardened bushings.
- Reinforced barrel.



MACHINED REEL

A reel with solid flanges, turned all over (drum, inner and outer flange, central hub, and bore). Available sizes adhere to DIN 46397 specifications or as indicated by the customer.

APPLICATIONS:

- For metallic, enamelled, and capillary metallic wires.
- Used for high-speed wire drawing machines or standing machines.
- Withstands annealing treatment.

STANDARD:

- Din 46395, Din 46397.
- Turned all over drum, inner and outer flange, central hub and bore with solid flanges.
- Dynamically balanced for speeds up to 40m/s.

STANDARD FLANGE (MM):

- 400, 560, 630, 800, 1000, 1250.
- Other dimensions are also available.

SURFACE FINISH:

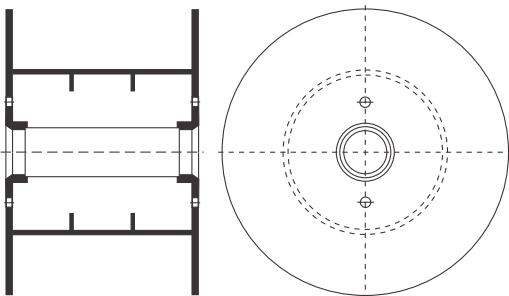
- Powder Coated.

CUSTOMIZED:

- Turning of a lift slot in the flanges.
- Wire accumulator on the outer flange.
- Engraving of progressive numbering, tare, and customer's logo.

OPTIONAL:

- Extra stiffened drum.
- Replaceable hardened bushings.
- Reinforced barrel.



REINFORCED REEL

A solid flange spool that with stands annealing treatment.

APPLICATIONS:

- For metallic wires.
- Used for wire drawing, stranding, or rope-making machine.
- Withstands annealing treatment.



STANDARD:

- Din 46395, Din 46397.
- Turned on the drum and in the central bore.
- Dynamic balanced for speeds up to 40m/s.

STANDARD FLANGE (MM):

- 400, 560, 630, 800, 1000, 1250.
- Other dimensions are also available.

SURFACE FINISH:

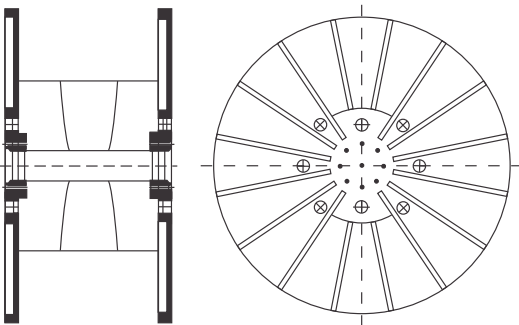
- Powder Coated.

CUSTOMIZED:

- Stainless steel execution.
- Lifting hooks.
- Wire accumulator on the outer flange.
- Turning of the inner flanges.
- Engraving of progressive numbering, tare, and customer's logo.

OPTIONAL:

- Replaceable hardened bushings.
- Unturned drum.



HEAVY DUTY REEL

A high-resistant spool for continuous use over time with a rounded or flat flange rim, withstands annealing treatment.

APPLICATIONS:

- For metallic wires.
- Used for wire drawing machines.

STANDARD:

- Din 46395, Din 46397.
- Dynamic balancing for speeds up to 40m/s.
- Double Pressed Flanges.

STANDARD FLANGE (MM):

- 400, 560, 630, 800, 1000, 1250.
- Other dimensions also available.

SURFACE FINISH:

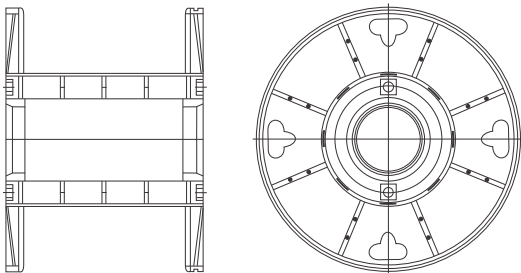
- Powder Coated.

CUSTOMIZED:

- Lifting hooks.
- Hot galvanizing.
- Wire accumulator in one flange rim.
- Turning of drum and inner flanges.
- Engraving of progressive numbering, tare, and customer's logo.

OPTIONAL:

- Replaceable hardened bushings of the central bore.
- Drilled drum.



DOUBLE WALL REEL

A double-flanged spool in pressed steel, particularly indicated for continuous use over time. The available sizes adhere to DIN 46395, 46397 specifications. Withstands annealing treatment.



APPLICATIONS:

- For metallic wires and cables.
- Used for wire drawing, stranding, or rope making machines.

STANDARD:

- Din 46395, Din 46397.
- Turned drum.
- External flange curl for lifting through automatic hooks.
- Dynamic balancing for speeds up to 40m/s.

STANDARD FLANGE (MM):

- 400, 560, 630, 760, 800, 1000, 1250.
- Other dimensions also available.

SURFACE FINISH:

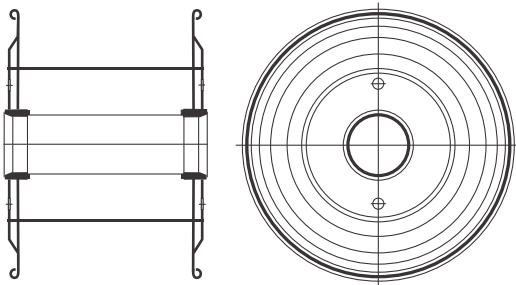
- Powder Coated.

CUSTOMIZED:

- Turning of the inner flanges.
- Engraving of progressive numbering, tare, and customer's logo.

OPTIONAL:

- Extra stiffened drum.
- Replaceable hardened bushings of the central bore.



SINGLE WALL REEL

A single-wall flange spool in pressed steel, can be used for one-way or multiple uses. The available sizes adhere to DIN 46395 specifications.

APPLICATIONS:

- Specifically used for metallic wires, welding wires, strips, cable, and the textile industry.
- Used for wire process, for shipping purposes, or one-way.



STANDARD:

- Din 46395.
- External flange curl for lifting through hooks.
- Dynamic balancing.

STANDARD FLANGE (MM):

- 400, 560, 630, 760, 800, 1000, 1250.
- Other dimensions also available.

SURFACE FINISH:

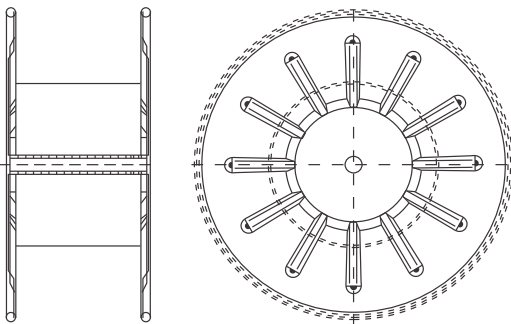
- Powder Coated.

CUSTOMIZED:

- Hot galvanizing.
- Choice of flange with or without ribs.
- Engraving of progressive numbering, tare, and customer's logo.

OPTIONAL:

- Extra stiffer in the drum.



STRUCTURAL REEL

A structural drum manufactured from round/square pipes, particularly indicated for continuous use over time. The available sizes adhere to DIN 46391, DIN 46397 specifications or as indicated by the customer.

APPLICATIONS :

- For wire ropes, strips, cable, rubber, and textile industries.
- Used for manufacturing and shipping purposes.

STANDARD:

- Din 46391, Din 46397.
- Fully fabricated from pipes and structures.
- Supplied with slots for locking and packing.

STANDARD FLANGE (MM):

- 800, 1000, 1120, 1330, 1600, 1800, 2000.
- Other dimensions also available.

SURFACE FINISH:

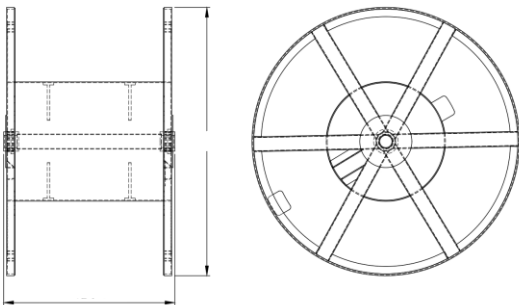
- Powder Coated.

CUSTOMIZED:

- Plastic, polyethylene, and carpet for inside lining.
- Engraving of progressive numbering, tare, and customer's logo.

OPTIONAL:

- Extra stiffened drum.
- Reinforced one-side tapered barrel.



CONICAL REELS

Reels with conical flanges machined in the centre bore. The barrel can be customized as either cylindrical or tapered. The available sizes adhere to DIN 46391 specifications or as indicated by the customer.

APPLICATIONS:

- For copper/ steel wire drawing.
- Barrel can be customized as cylindrical /tapered.

STANDARD:

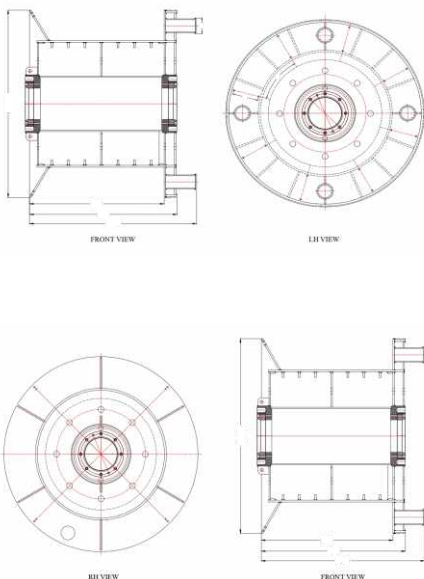
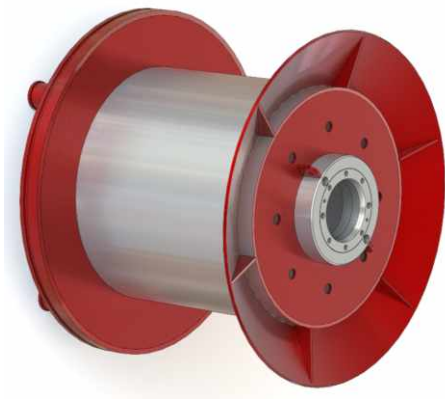
- Din 46391, Din 46395, Din 46397.
- Fully machined Reel.
- Dynamically balanced for speeds up to 40m/s.

STANDARD FLAG (MM):

- 630, 800, 1000, 1120, 1250.
- Other dimensions are also available.

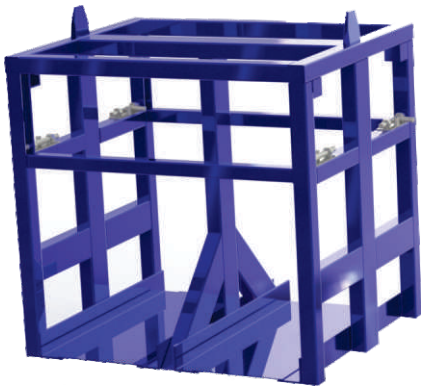
SURFACE FINISH:

- Powder coated.
- Shot blasted with zinc thermal spray.
- Spray painted.
- Customized as per customer specification.



Material Handling Pallets

Pallets designed for easy and convenient transportation and stocking of reels and wires, customized according to customer requirements.



APPLICATIONS:

- Easy and convenient transportation of reels and wires.
- Easy storage of reels and wires.
- Withstands annealing treatment.

STANDARD:

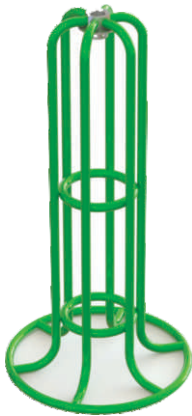
- Fully fabricated customized Pallets.

SURFACE FINISH :

- Powder coated.
- Shot blasted with zinc thermal spray.
- Spray painted.
- Customized as per customer specification.

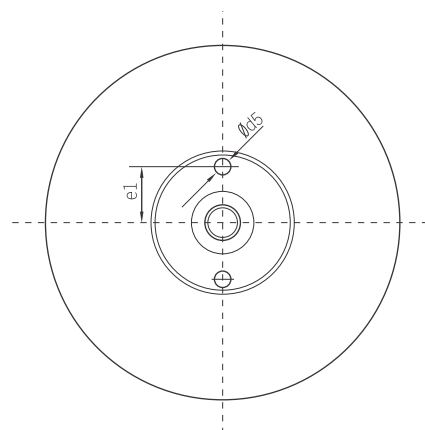
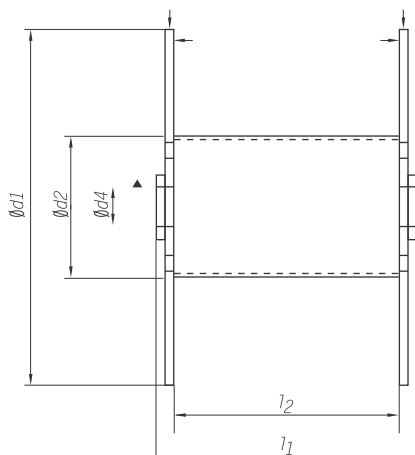
CUSTOMIZED:

- Engraving of progressive numbering, tare, and customer's logo.
- Hot galvanising.



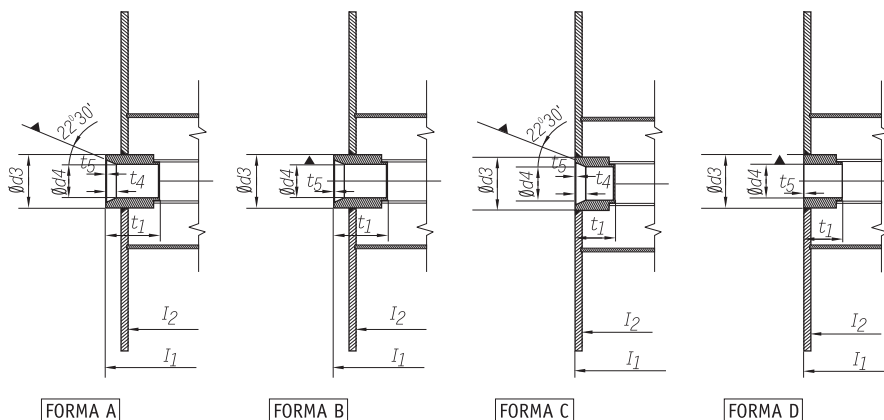
DIN 46391 SPECIFICATIONS

d_1	d_2	d_4	d_5	e_1	l_1	l_2
710	355	80	30	100	550	400
800	400		40			
900	450		50	160	710	560
1000	500		65		900	710
1250	630				1120	900
1400	710	300		1360	1120	
1600	800					
1800	1000	125	65	400	1450	1220
2000	1000					
2240	1120					
2500	1400					
	1250					
2800	1400					
	1600					
3000	1800	140	600	2000	1600	
3150	1800					
3350	2000					
	2360					
3550	2000					
	2360					
3750	2360	200	80	1000	2240	1800
	2650					
4000	2650					
4250	2800					
	2650					
4500	2800	2500	2000			
	3000					



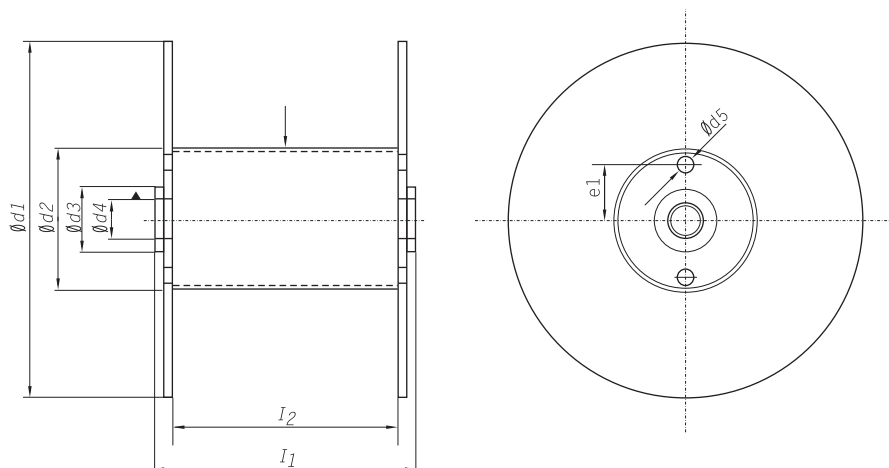
DIN 46397 SPECIFICATIONS

D ₁	D ₂	D ₃ (max)	d ₄	d ₅ hole/pin	e ₁	l ₁	l ₂			
100	40	50	28	8-16	40	80	63			
125	50					95	80			
160	63					118	100			
200	80					150	125			
250	100	71	36		71	125	100			
	100					190	160			
315	125				150	125				
	160				236	200				
355	140			112	56	16-28	190	160		
	180						265	224		
400	160	215	180							
	200	300	250							
450	180	112	56				112	236	200	
	224							335	280	
500	200					265	224			
	250					375	315			
560	224					140	56	140	300	250
	280								425	355
630	250	335	280							
	315	475	400							
710	355	375	315							
800	400	160	80	28-40	530			450		
900	450				600	500				
1000	500				670	560				
1120	560				750	630				
1250	630			850	710					
1400	710			950	800					
1600	800			1060	900					
1800	1000			1180	1000					
2000	1120	200	100	40-63	1320	1120				
2240	1250				1500	1250				
2500	1500			1700	1400					
2800	1800			1900	1600					
		280	140		2120	1800				



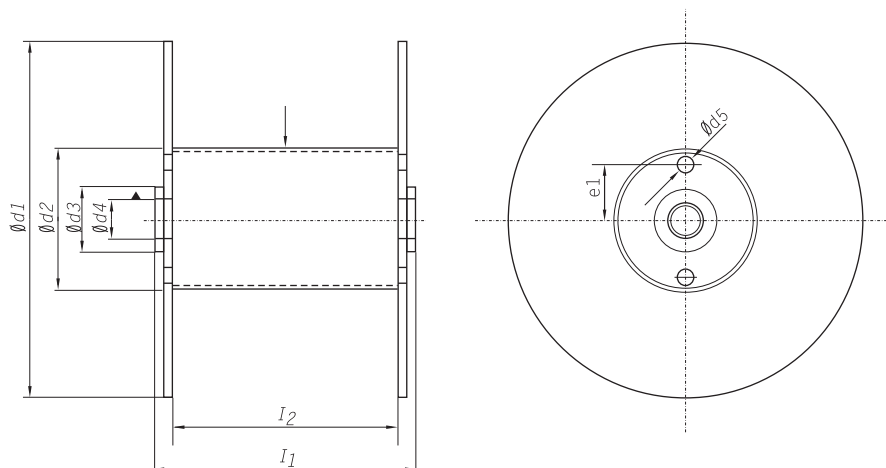
DIN 46395 SPECIFICATIONS

d_1	d_2	d_3	d_4	d_5 hole/pin	e_1	t_5	l_1	l_2
100	56		50			1	80	60
125	71		63				95	75
160	90		80				118	95
200	112		100			1.6	150	118
	125							
	140							
224	125						170	140
	140							
	160							
250	140						190	160
	160							
	180							
315	180						236	200
	200							
	224							
355	200	160	127	16		2	212	180
	224							
	250							
400	224				100		236	200
	250							
	280							
450	250						265	224
	280							
	315							

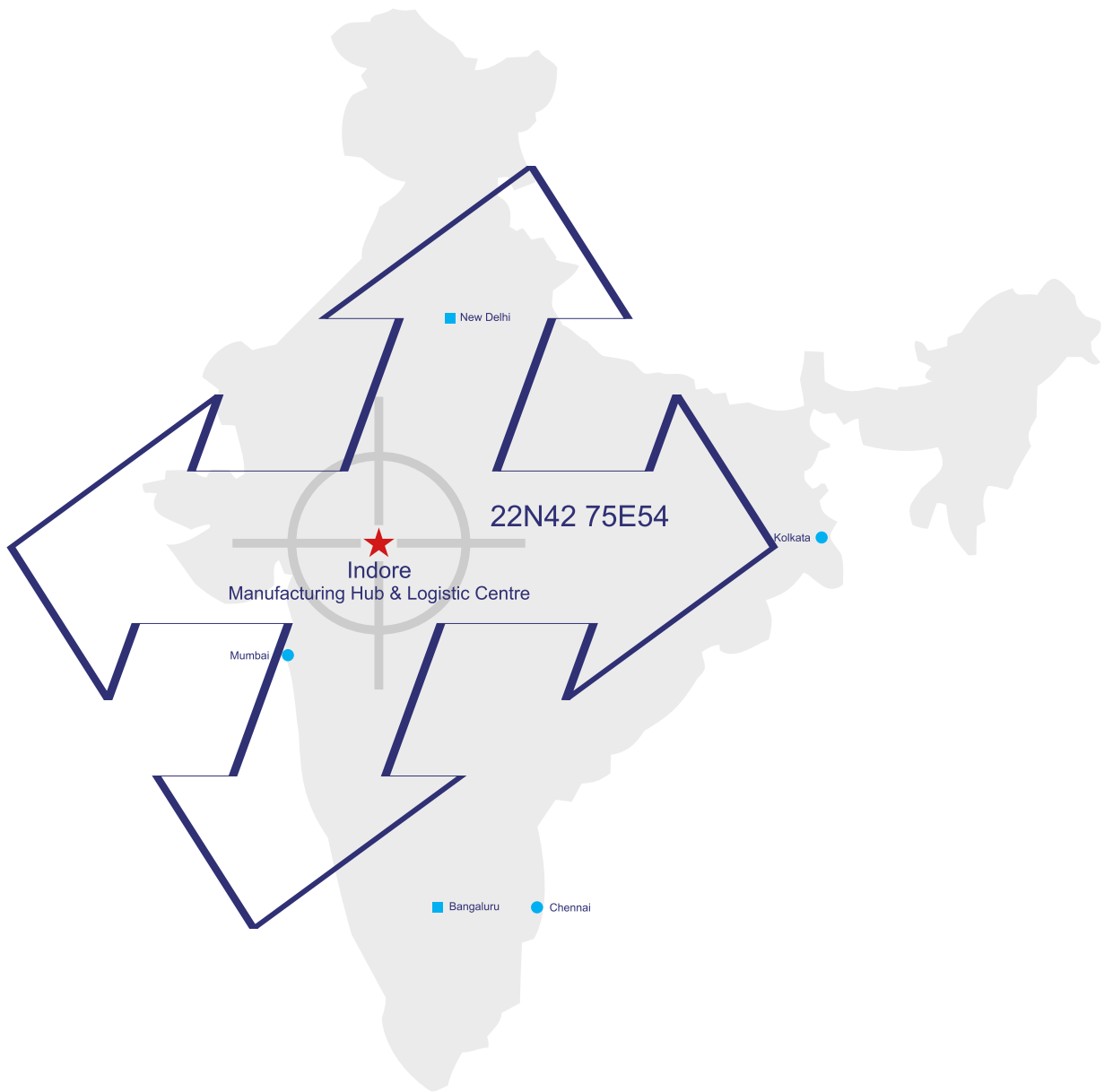


DIN 46395 SPECIFICATIONS

d ₁	d ₂	d ₃	d ₄	d ₅ hole/pin	e ₁	t ₅	l ₁	l ₂					
500	280	160	127	28	100	2	300	250					
	315						375	315					
	355						335	280					
560	315						425	355					
	355						375	315					
	400						475	400					
630	355						300	250	40	170	2.5	425	355
	400											530	450
	450											475	400
710	400											600	500
	450											750	630
	500											950	800
800	450	50	250	250	250	2.5						475	400
	500											600	500
	560											750	630
1000	560											950	800
	630											950	800
	710											950	800
1250	710						950	800					
	800						950	800					
	900						950	800					



MANUFACTURING FACILITY



SKYLINE Industries (P) Limited,

A-8, Sector A, Industrial Area, Sanwer Road, Indore (M.P.) INDIA

Ph. : +91-731-2970036, 4247169

E-mail : info@skylineindustries.in

www.skylineindustries.in

